





# Urban project

is a **consultancy company** in the field of urban planning, architecture and engineering.

Our know-how stems from the consolidated experience of partners who have collaborated in a structured manner for years, sharing offices and operational headquarters. Together we have won public tenders for the execution of significant and complex interdisciplinary projects.

The goal of URBAN PROJECT is to become a point of reference in the public and private procurement market and national and international market, offering cutting-edge solutions that integrate architectural creativity with the best engineering practices.

*We Meet the Growing Need for Innovation.*

*We provide tailored projects that meet the specific needs of clients.*

- **ORGANIZATIONAL CHART:**
- 51 engineers;
- 46 architects;
- 15 surveyors;
- 10 administrative employees.

# OUR GOALS

## 112 MLN €

Three-Year Revenue (2023 - 2025).

## 336

Approved Projects (2023 - 2025).

Open Construction  
Sites.

## 82

Projects Under  
Evaluation.

## 73

## 196

Completed Sites (2023 - 2025).

**URBAN PROJECT** is the result of decades of experience of **4 companies:**  
**Ideàs, AXE, Seed, EMI.**

*They provide end-to-end design construction supervision services across all sectors.*

**URBAN PROJECT** is divided into **two directions: master plan/buildings and infrastructure** (roads, railways, ports, airports, etc.)

## IDEÀS

a benefit corporation and **architecture/engineering** firm, brings an innovative and sustainable vision to design. Specializing in the redevelopment of existing buildings and the operational development of complex projects, it offers integrated solutions from design to project management. With attention to aesthetics, functionality, and environmental respect, IDEÀS employs advanced technologies and eco-friendly materials. Through a network of qualified professionals, IDEÀS manages and designs medium and large-scale interventions, enhancing building assets while meeting client needs with quality and expertise.

## AXE

founded over 20 years ago, is an **engineering company** with extensive experience in private and public construction. It specializes in **urban and building design** (architecture, restoration, structures, MEP), with expertise in residential, industrial, and tertiary sectors, operating in Italy and abroad. AXE also manages site supervision and safety, ensuring a high level of technical expertise.

## SEED Consulting

established in Tirana in 2014, provides high-quality consultancy services in **transport and infrastructure engineering**, both nationally and regionally. The company has played a key role in numerous significant projects across Albania and also abroad for an international clientele. With a commitment to excellence, SEED Consulting aims to deliver state-of-the-art engineering design and consultancy services, ensuring compliance with the highest industry standards. The firm specializes in all phases of project development, from concept and feasibility studies to detailed design and construction drawings, covering roads, bridges, tunnels, railways, ports, and airports, consistently meeting international standards and client expectations.

## EMI Engineering

Dr. Eng. Emidio Capretta, a graduate in **Energy and Nuclear Engineering**, is a certified Energy Management Expert (EGE) accredited by Accredia in both civil and industrial sectors. Active since 1994, he was among the first professionals in Italy to recognize the importance of renewable energy sources and energy efficiency. Thanks to extensive international experience, he collaborates closely with major industrial groups and universities, distinguished for his expertise, innovation, and management skills.

## OUR LOCATIONS



## OUR CERTIFICATIONS

- ISO 9001:2015
- ISO 45001:2023
- ISO 14001:2018
- ISO 14064:2019
- SA 8000
- ISO 37001:2016
- UNI PDR 134:2022
- ESPERTO CAM
- ISO 26000:2020
- CSP/CSE
- BIM Manager Coordinator Specialist

# FOUNDING PARTNERS

## IDEÀS



Miro **Bettinelli**



Ladislao **Balbiani**

## AXE



Alessandro **Ravaglioli** Pier Vittorio **Morri**



Andrea **Bettinelli**



Oronzo **Fanelli**

## SEED Consulting EMI Engineering



Ylli **Gjoni**



Emidio **Capretta**

# OUR PROJECTS

## DIVISION OF INTERVENTIONS

*Building & Infrastructure*

### Building

- 1** Ablyai Khan Plaza, *Kazakistan*
- 2** Urbanization The Conchiglie Garden, *Italy*
- 3** Marebello Urbanization, *Italy*
- 4** Romeo Neri Stadium, *Italy*
- 5** Woqod Tower, *Qatar*
- 6** Algerian Embassy, *Qatar*
- 7** Milan Business Center 2, *Italy*
- 8** Grand Hotel Rimini, *Italy*
- 9** Private Building, *Italy*
- 10** Private Villa, *Italy*
- 11** Perticari Palace, *Italy*
- 12** Villa Des Vergers, *Italy*
- 13** Villa Miralfiore, *Italy*

# Infrastructure

- 1** Feasibility Study for Reconstruction of Quays 1 & 2 in the Durrës Port, *Albania*
- 2** Preliminary Design for Rehabilitation of the Corridor VIII, *Albania*
- 3** Feasibility study, Preliminary and Executive design for Valona International Airport, *Albania*
- 4** Preparation of the Feasibility Study and Design for the Motorway Connecting Thumanë, *Albania*
- 5** Review of Feasibility Study and Drafting of the Engineering project “Construction of Llogara Tunnel”, *Albania*
- 6** Multifunctional complex MezzaRoma, *Italy*
- 7** Jubilee Intervention for the Roundabout, *Italy*
- 8** Adriatic Multimodal Corridor, *Italy*



# HOW WE PERFORM PERFECT SNIP STANDARDS APPLICATION

## **DESIGN OF A NEW MULTIFUNCTIONAL COMPLEX - BUSINESS CENTER - HOTEL - SHOPPING GALLERY AND FOODCOURT**

AREA:  
47 000 sq

CONTRACTOR:  
Renco

CLIENT:  
Darin Construction

DELIVERED:  
2018

WE DESIGNED AND DELIVERED THE ABYLAI KHAN PLAZA IN ALMATY, A 47,000 SQ M MULTIFUNCTIONAL COMPLEX SETTING NEW STANDARDS IN CENTRAL ASIAN ARCHITECTURE. STANDING 11 STORIES TALL, IT STRATEGICALLY MERGES COMMERCIAL SPACES, MODERN OFFICES, EXCLUSIVE RESIDENCES, AND THE PRESTIGIOUS MERCURE HOTEL. OUR DESIGN CREATED A DYNAMIC, TECHNOLOGICALLY ADVANCED, AND ARCHITECTURALLY ELEGANT HUB (COMPLETED 2018)—A TRUE “BUSINESS CENTER OF THE FUTURE” PERFECTLY ADDRESSING CONTEMPORARY LIFESTYLE DEMANDS.

AXE

Almaty Kazakhstan

ABYLAI KHAN PLAZA





P  
15:20  
18:00

ABYLAI KHAN PLAZA

ПАВЛОВСКОЕ ГАИ ДПС

PROSECCO BAR



AXE

Almaty Kazakhstan

ABYLAI KHAN PLAZA



AXE Riccione Italy

URBANIZATION



# CONCHIGLIE GARDEN URBANIZATION

URBANIZATION PROJECT FOR A RESIDENTIAL COMPLEX LOCATED  
IN RICCIONE.



AXE

Riccione Italy

URBANIZATION



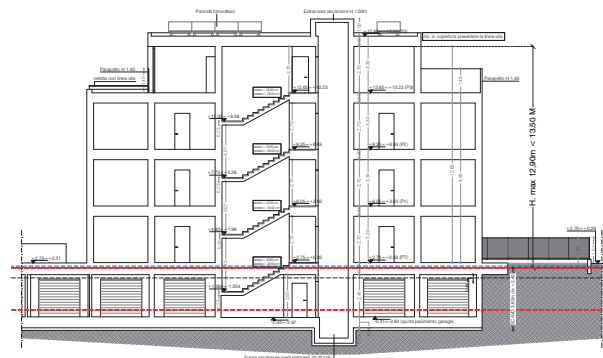
AXE Rimini Italy

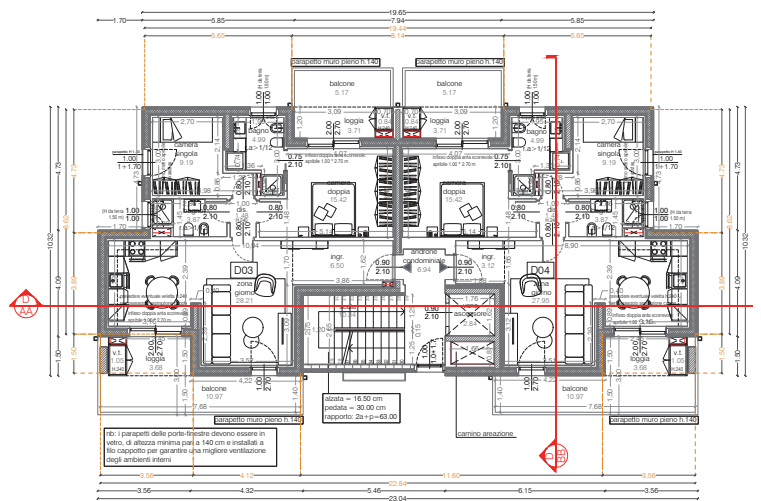
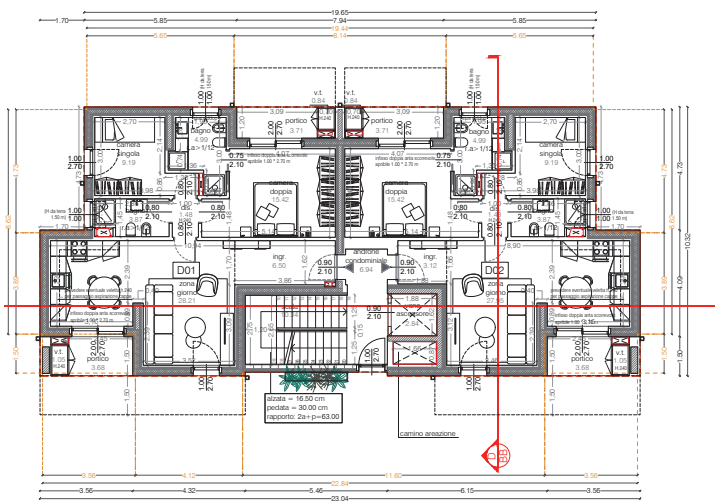
URBANIZATION



# MAREBELLO URBANIZATION

CONSTRUCTION OF NEW RESIDENTIAL BUILDINGS INCLUDED IN THE DETAILED PLAN, AS SPECIFIED IN PROJECT SHEET NO. 13/25B, APPROVED BY CITY COUNCIL RESOLUTION NO. 101 ON JULY 14, 2009.







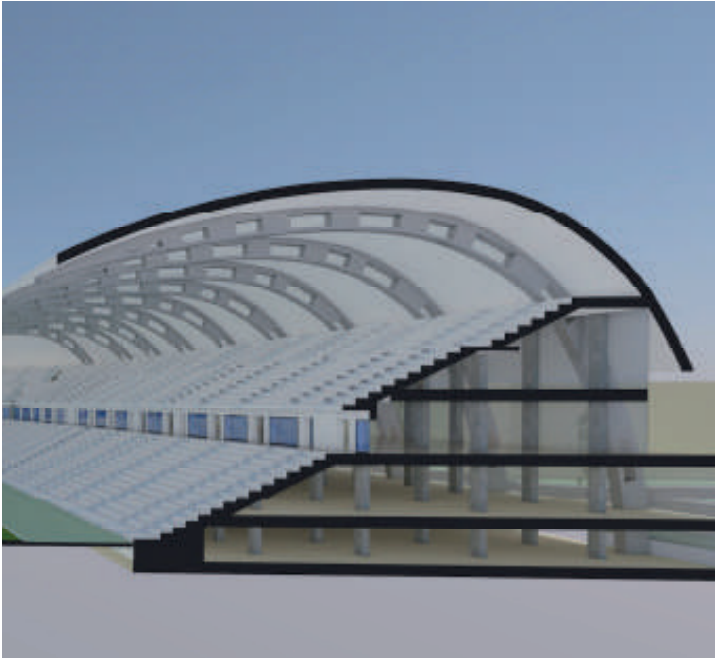
# ROMEO NERI STADIUM

**COMPLETE DESIGN OF THE THREE  
SIDES OF THE STANDS AND THE  
INCREASE IN CAPACITY AND  
NUMBER OF SEATS**



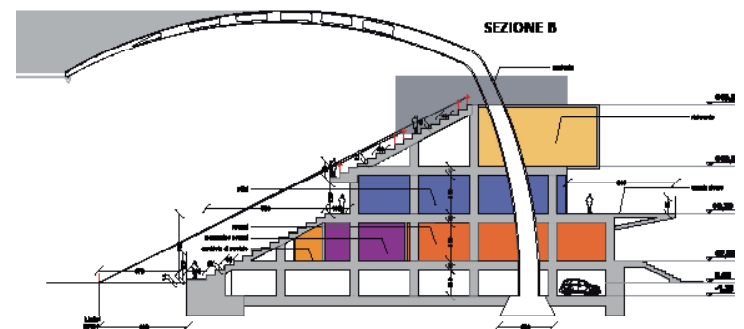
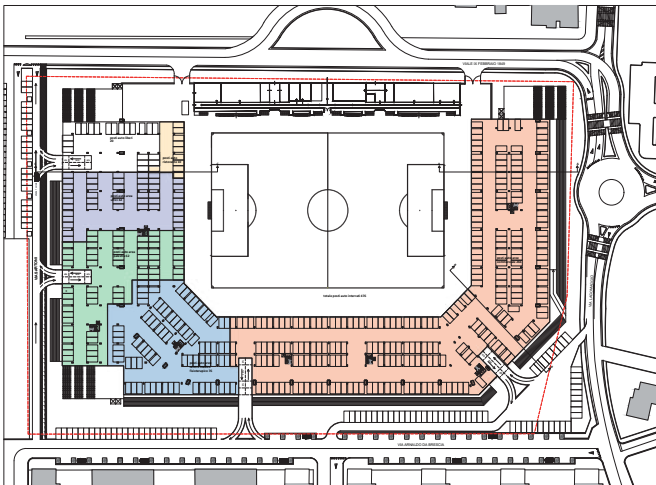
# IDEÀS & AXE Rimini Italy

## RIQUALIFICAZIONE



A THREE-PHASE PLAN: CONSERVE THE PROTECTED HISTORIC CORE - NO CHANGES TO THE VIALE IX FEBBRAIO FAÇADE - WHILE ADDING ROOF COVERAGE TO UNCOVERED STANDS AND REORGANIZING INTERIORS; DEMOLISH NON-LISTED STANDS/AREAS TO FULLY RECONFIGURE SITE FUNCTIONS AND VOLUMES; INCREASE SPECTATOR CAPACITY AND BUILT AREA, INTEGRATING NEW SPORTS-MEDICINE, OFFICE/ADMINISTRATIVE, AND RETAIL USES.

THE CONCEPT IS BASED ON AN ELEVATED CIRCULATION LEVEL, FREEING THE GROUND FLOOR FOR PUBLIC ACCESS AND COMPLEMENTARY ACTIVITIES THAT EXTEND THE STADIUM'S ROLE BEYOND SPORTS.



# LOZNICA STADIUM

CATEGORY:  
Sport

DELIVERED:  
2021

LOCATED IN LOZNICA, SERBIA (2021), THIS NEW SPORTS VENUE SERVES AS A CIVIC LANDMARK AND A DAILY GATHERING PLACE FOR THE COMMUNITY. OUR TEAM PROVIDED BUILDING SERVICES CONSULTANCY AND COORDINATION IN SUPPORT OF THE ARCHITECTURAL DESIGN, ALIGNING USER COMFORT, SAFETY, AND SMOOTH DAY-TO-DAY OPERATIONS WITH THE PROJECT'S VISION, BUDGET, AND CONSTRAINTS. WORKING CLOSELY WITH ARCHITECTS AND ENGINEERS FROM THE EARLY STAGES, WE HELPED ENSURE THAT KEY DECISIONS SUPPORTED AN INTUITIVE VISITOR EXPERIENCE AND RELIABLE BUILDING PERFORMANCE WITHOUT OVERCOMPLICATING DELIVERY.

THE APPROACH EMPHASISED CLARITY AND PRACTICALITY: WELCOMING SPACES AND CLEAR CIRCULATION FOR SPECTATORS, EFFICIENT ROUTES AND SUPPORT AREAS FOR STAFF AND ATHLETES, AND STRAIGHTFORWARD OPERATIONAL ROUTINES FOR THE OPERATOR. ATTENTION TO FLEXIBILITY ALLOWS THE VENUE TO ADAPT TO DIFFERENT EVENT FORMATS AND CAPACITIES, WHILE CHOICES WERE STEERED TOWARD DURABILITY AND EASE OF UPKEEP TO SUSTAIN LONG-TERM VALUE. THE RESULT IS A ROBUST, EASY-TO-RUN ENVIRONMENT THAT REMAINS INVITING FOR ATHLETES, STAFF, AND SPECTATORS AND CONTINUES TO CONTRIBUTE POSITIVELY TO THE CITY'S PUBLIC LIFE.



EMI Engineering Loznica Serbia

DETAILED HVAC DESIGN





# MEP EXCELLENCE IN INTERNATIONAL HIGH-RISE STRUCTURES

## **ADVANCED TECHNICAL SYSTEMS INTEGRATION TO MEET EXTREME CLIMATIC AND SAFETY STANDARDS**

CLIENT:  
WOQOD (Qatar Fuel Company)

LOCATION:  
Doha, Qatar

SERVICE TYPE:  
MEP Design (Mechanical, Electrical, Plumbing)

BUILDING:  
4 Basements + G + M + 30 Floors

WITH ITS 30 FLOORS (4B+G+M+30F), THE WOQOD OFFICE TOWER IN DOHA SERVES AS THE NEW HEADQUARTERS FOR QATAR FUEL. OUR CORE EXPERTISE WAS THE MEP DESIGN (MECHANICAL, ELECTRICAL, AND SPECIAL SYSTEMS), CRUCIAL FOR ENSURING THE OPERATIONAL EFFICIENCY AND RELIABILITY OF THIS COMPLEX HIGH-RISE IN A DEMANDING CLIMATE. THE PROJECT REQUIRED INTEGRATING HIGH-TECHNOLOGY SYSTEMS, INCLUDING: HIGH-EFFICIENCY HVAC SYSTEMS TO MANAGE QATAR'S SPECIFIC CLIMATE CHALLENGES; ADVANCED FIRE FIGHTING AND FIRE ALARM SYSTEMS FOR FULL TOWER SAFETY; A COMPLEX ELECTRICAL DISTRIBUTION AND SPECIALIZED SYSTEMS ACROSS 30 STORIES.



EMI Engineering

Doha Qatar

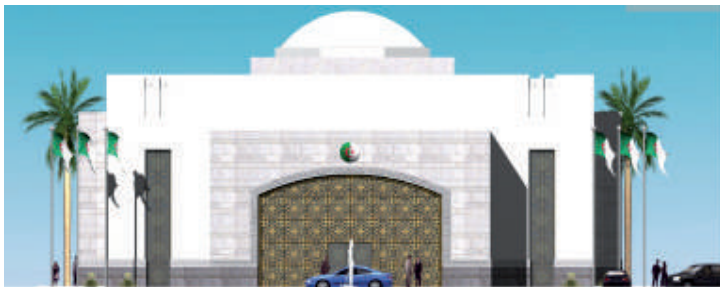
WOQOD TOWER

EMI Doha Qatar

EXECUTIVE DESIGN

# ALGERIAN EMBASSY

EXECUTIVE DESIGN OF MECHANICAL, ELECTRICAL AND SPECIAL SYSTEMS.



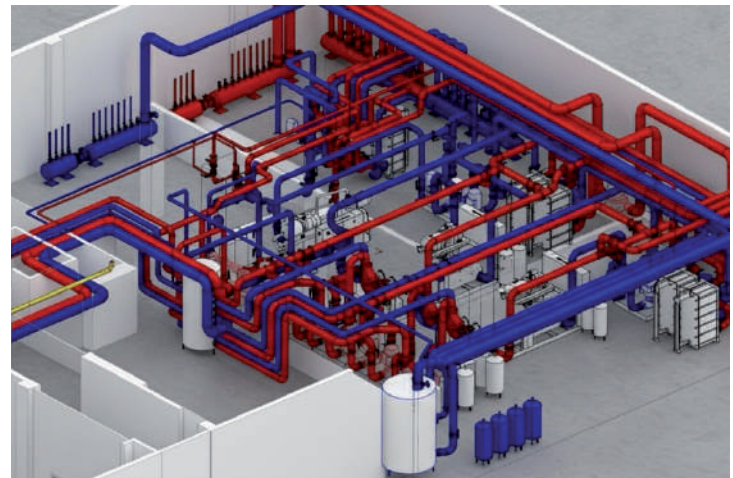
REAR ELEVATION

SIDE ELEVATION



# MILAN BUSINESS CENTER 2

EXECUTIVE DESIGN, REDEVELOPMENT OF TECHNOLOGICAL SYSTEMS OF ONE OF THE MOST IMPORTANT BUSINESS CENTERS IN ITALY.



# PRIVATE BUILDING

RIQUALIFICATION PROJECT FOR A RESIDENTIAL BUILDING  
LOCATED IN THE CENTER OF MILAN.



AXE Rimini Italy

RESTORATION



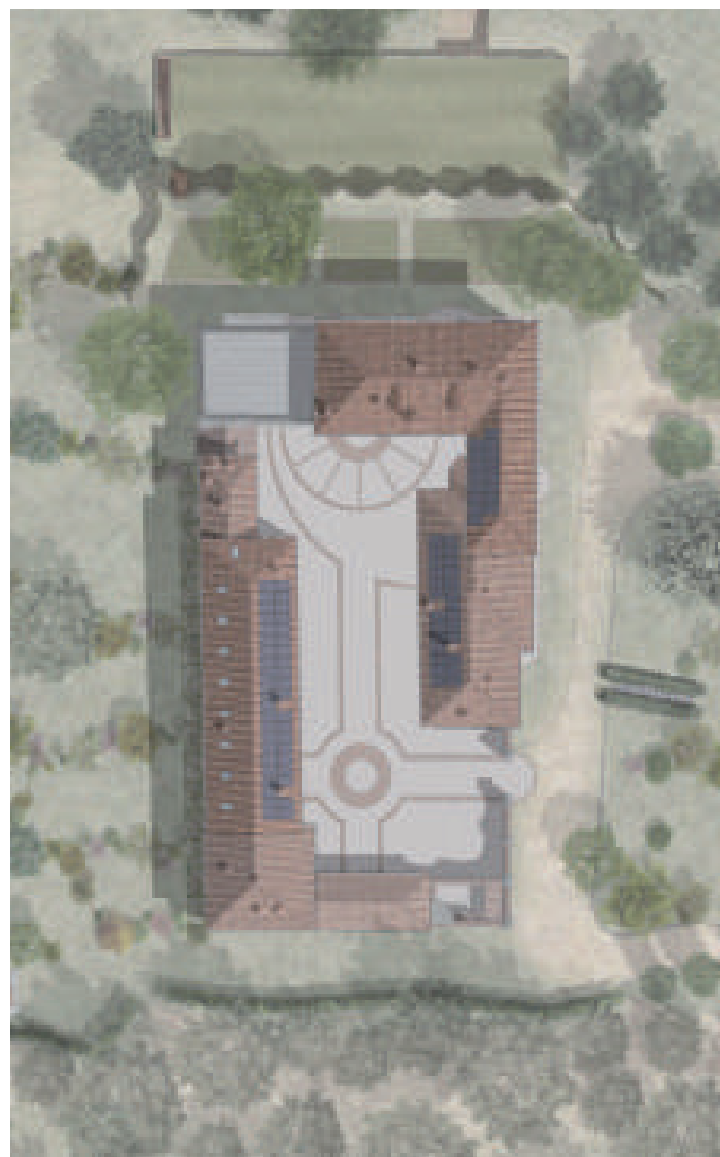
# GRAND HOTEL

DESIGN OF FACADE RESTORATION WITH RECONSTRUCTION OF HISTORIC DOMES AND RESTYLING OF PRIVATE BEACH.



# PRIVATE VILLA

RIQUALIFICATION AND RECOVERY PROJECT FOR RURAL BUILDINGS FOR RESIDENTIAL PURPOSES.



AXE Pesaro Italy

RESTORATION



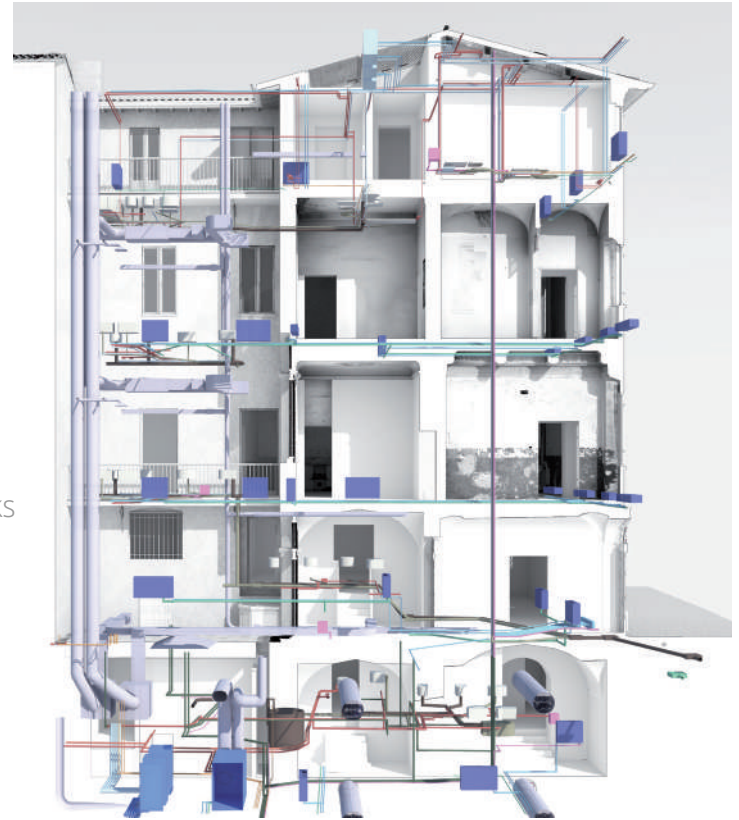
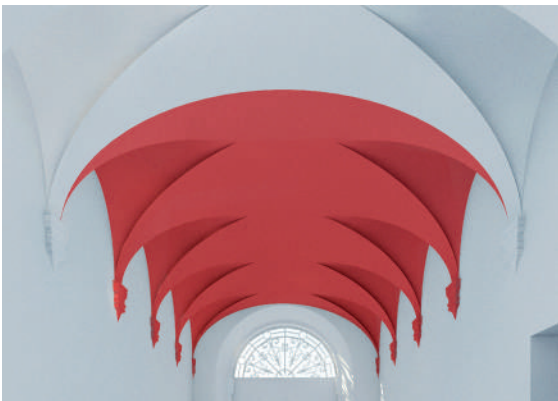
## PERTICARI PALACE

OVER THE CENTURIES, THE BUILDING HAS UNDERGONE VARIOUS WORKS OF TRANSFORMATION, SUBDIVISION, AND STRUCTURAL CONSOLIDATION, INCLUDING THE ENCLOSING OF THE LOGGIAS MANDATED BY ORDINANCE IN THE AFTERMATH OF THE 1672 EARTHQUAKE.

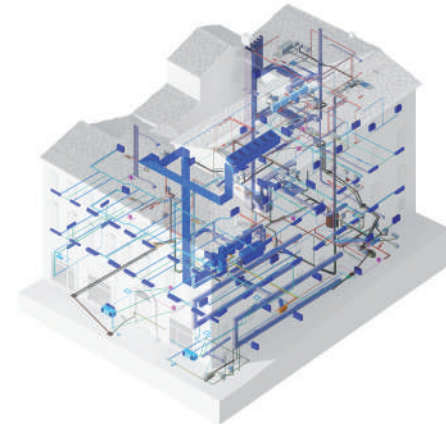




ENTRANCE HALL  
BEFORE DURING THE  
RESTORATION WORKS



MEP SYSTEMS INTEGRATION STUDY





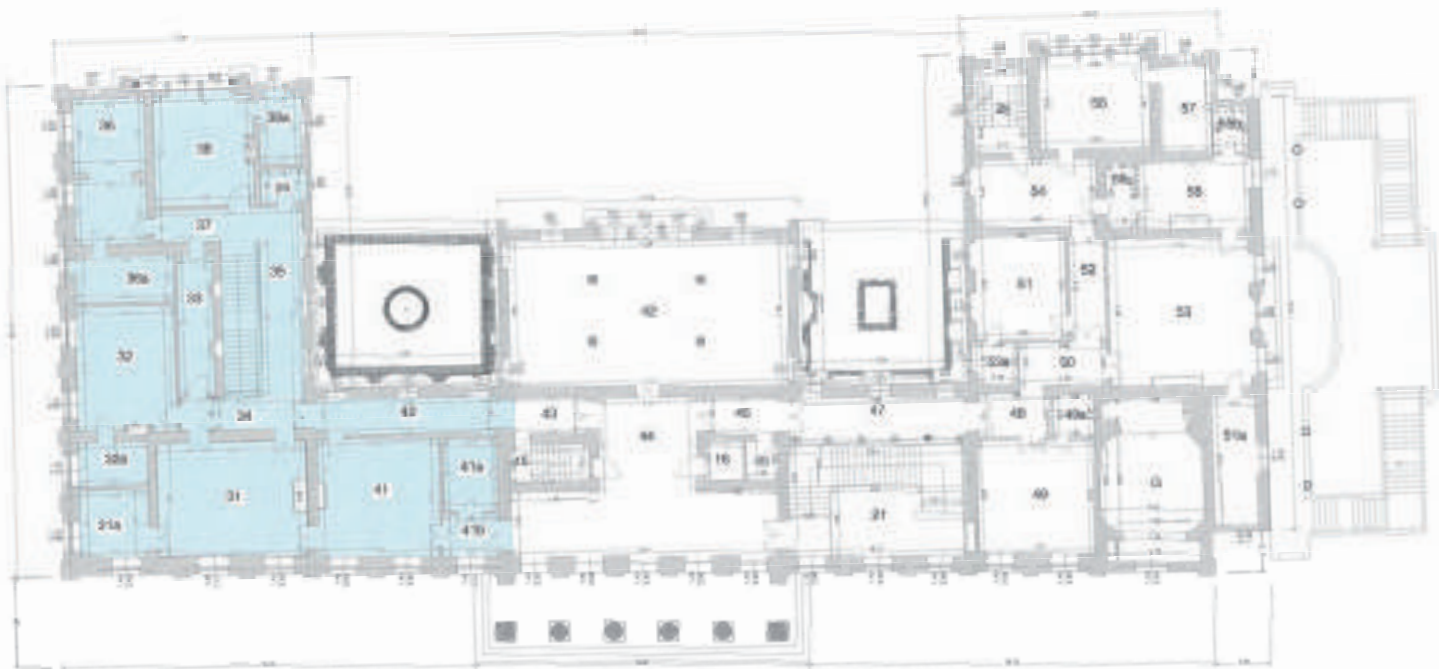
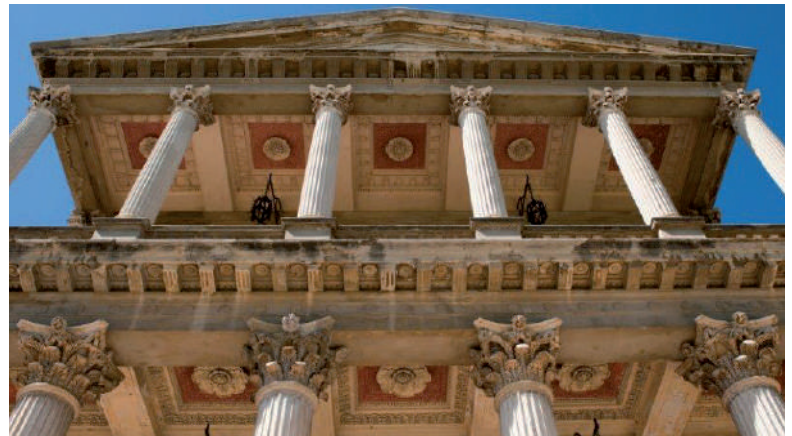
# VILLA DES VERGERS

REDEVELOPMENT OF THE HISTORIC-LANDSCAPE AREA OF THE 1500-1800-ERA VILLA DES VERGERS AND RESTORATION OF THE INTERIORS.



AXE Rimini Italy

RESTORATION



AXE Pesaro Italy

RESTORATION



## VILLA MIRALFIORE

THIS PROJECT ENVISIONS THE REVITALIZATION OF THE HISTORIC GARDENS' GREEN INFRASTRUCTURE AND THE STRUCTURAL CONSOLIDATION OF THE SUB-GARDEN AREAS ON THE NORTH SIDE, ADJACENT TO THE CHURCH, PERIMETER WALLS, FENCES, AND ENTRANCES.



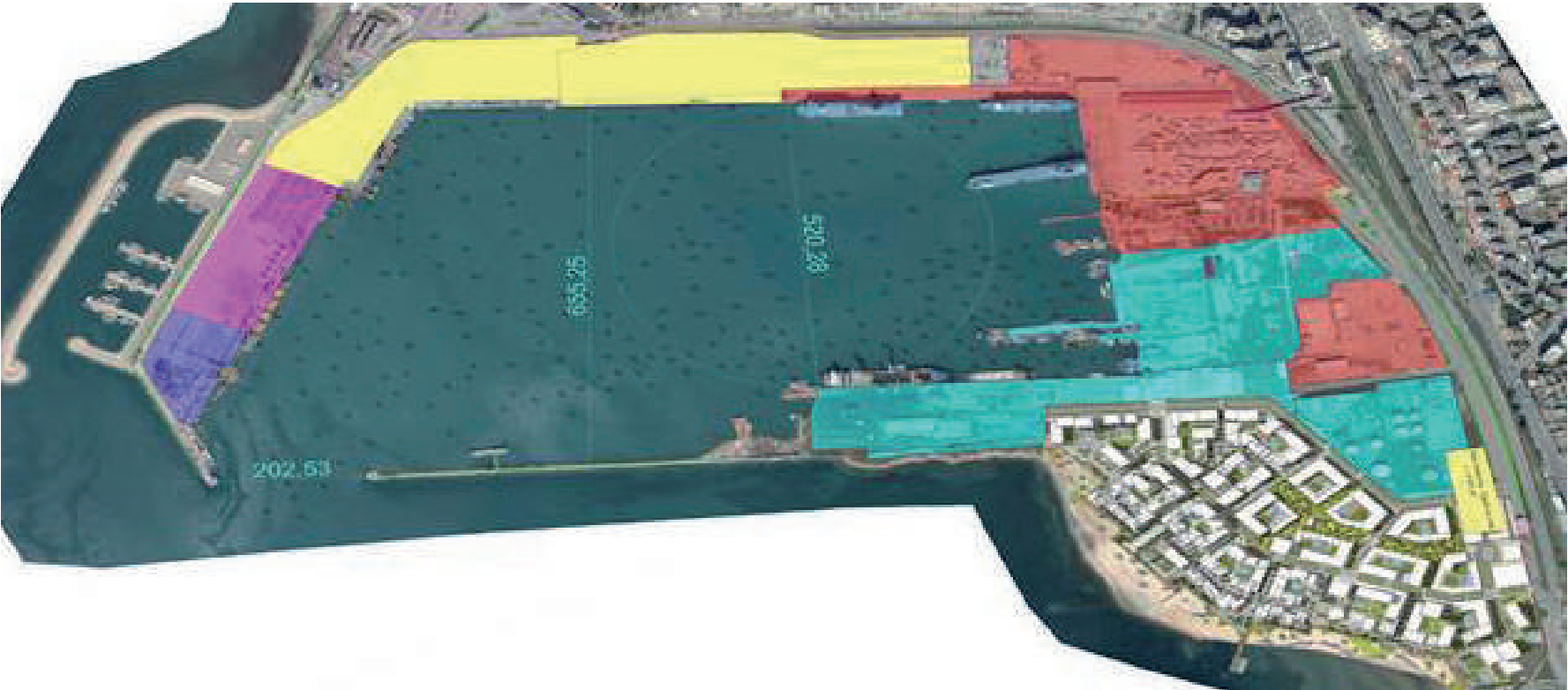
AXE Pesaro Italy

RESTORATION



IT INTRODUCES AN ARCHITECTURAL PROGRAM COMPRISING A TEACHING HALL/AUDITORIUM, A CAFÈ WITH RECEPTION, WHILE THE SCULPTURAL HERITAGE - GROTTO BASINS AND FOUNTAINS - UNDERGOES CAREFUL RESTORATION.





# WE MODERNIZED ALBANIA'S MARITIME GATEWAY

**ENHANCING PORT SAFETY  
AND CAPACITY THROUGH  
STRUCTURAL RECONSTRUCTION  
AND STRATEGIC DREDGING.**

CLIENT:  
JV IPF6 - Hill International - Planet

LOCATION:  
Durrës, Albania

SERVICE TYPE:  
Feasibility Study, Infrastructure and Maritime Engineering

FOCUS:  
Structural Reconstruction, Dredging, Increased Port Capacity

AREA:  
Quays 1 & 2 (Port of Durrës)

THE PROJECT INVOLVED A COMPREHENSIVE FEASIBILITY STUDY FOR THE RECONSTRUCTION OF QUAYS 1 AND 2 AT THE PORT OF DURRËS, THE LARGEST PORT IN ALBANIA. DEVELOPED IN JOINT VENTURE (JV IPF6-HILL INTERNATIONAL-PLANET), THE STUDY AIMED TO ACHIEVE TWO CRITICAL OBJECTIVES:

- STRUCTURAL AND SAFETY UPGRADE: COMPLETE RECONSTRUCTION OF THE QUAYS TO SIGNIFICANTLY IMPROVE THEIR SAFETY AND STRUCTURAL INTEGRITY, ENSURING RESILIENCE AND LONGEVITY.

- INCREASED MARITIME ACCESS: FACILITATING ACCESS FOR LARGER VESSELS BY DEFINING THE NECESSARY DREDGING INTERVENTIONS TO INCREASE THE OPERATIONAL DEPTH OF THE BASIN ADJACENT TO THE QUAYS.

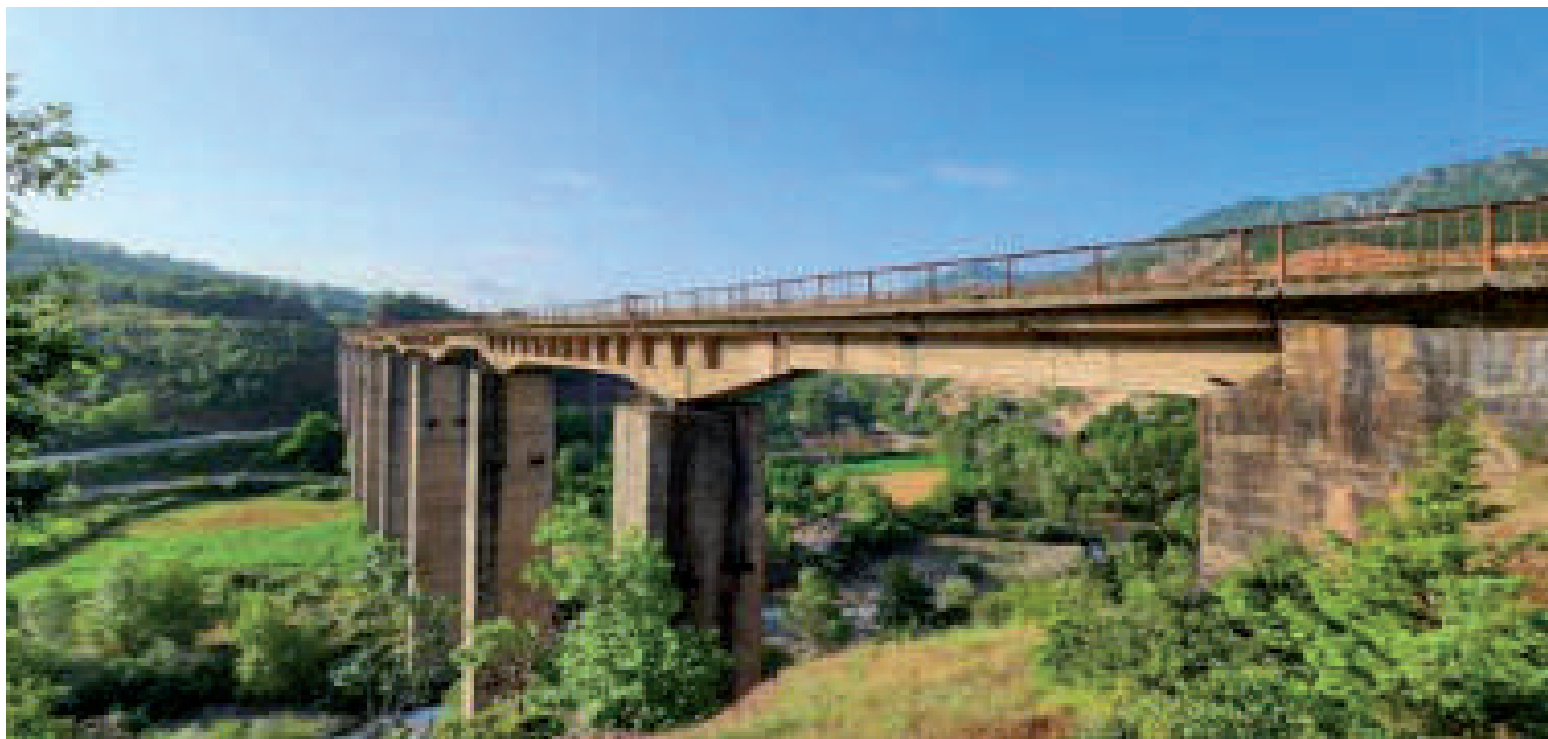
OUR CORE EXPERTISE WAS LEVERAGED TO EVALUATE THE TECHNICAL, OPERATIONAL, AND FINANCIAL PARAMETERS NECESSARY FOR THE SUCCESSFUL AND COMPLIANT EXECUTION OF THESE ESSENTIAL INFRASTRUCTURE WORKS.



# RROGOZHINË- POGRADEEC RAILWAY SECTION

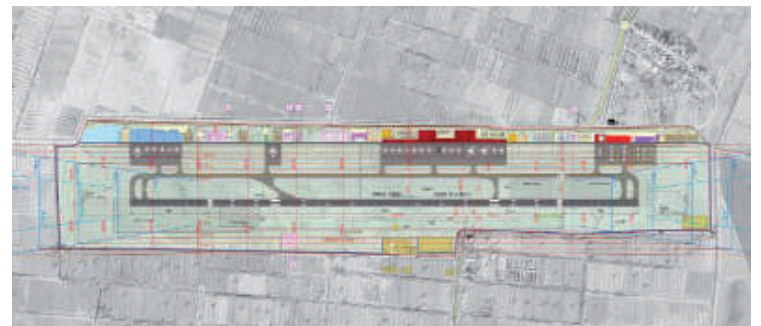
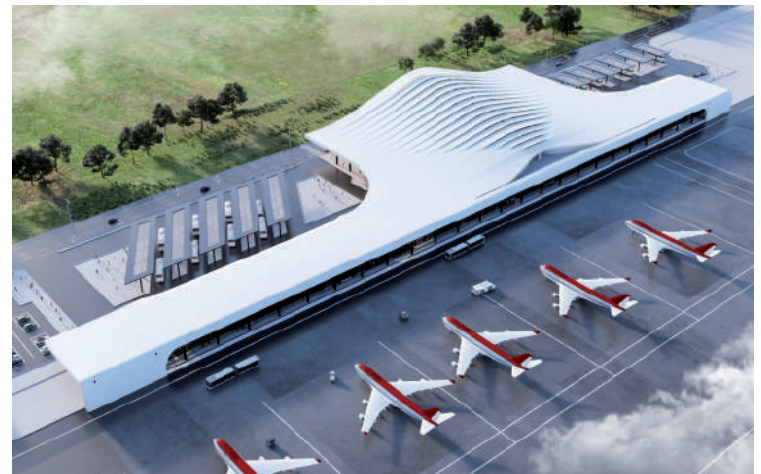
## **PRELIMINARY DESIGN FOR REHABILITATION OF THE CORRIDOR VIII, 120 KM**

THE PRELIMINARY DESIGN FOR REHABILITATION OF CORRIDOR VIII, RROGOZHINË- POGRADEC RAILWAY SECTION (120 KM), IS DEVELOPED WITH SUEZ ON BEHALF OF SAFEGE-ARDANUY CONSORTIUM, AND IS STRATEGIC FOR ALBANIA'S AND REGIONAL INFRASTRUCTURE.



## FEASIBILITY STUDY, PRELIMINARY AND EXECUTIVE DESIGN FOR VALONA INTERNATIONAL AIRPORT

PREPARATION OF THE PRELIMINARY AND DETAILED DESIGN OF AIRPORT INFRASTRUCTURE AS GEOMETRY AND PAVEMENT OF RUNWAY, TAXIWAYS AND APRONS, CONNECTION ROAD NETWORK, PARKING AREAS, FENCE. HYDROLOGICAL STUDY WITHIN AREA OF INTEREST IS ALSO PART OF THIS PROJECT TO EVALUATE THE POTENTIAL RISK OF FLOODING.

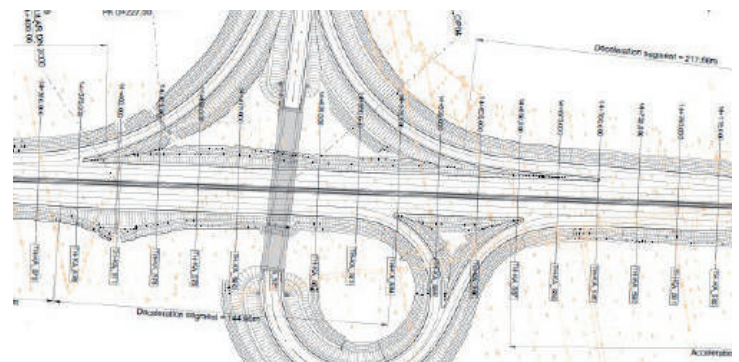


# THE MOTORWAY CONNECTING THUMANË - VORË- KASHAR

## PREPARATION OF THE FEASIBILITY STUDY AND DETAILED DESIGN



THIS PROJECT WAS CONSIDERED AS HIGHLY IMPORTANT BOTH FOR ALBANIA'S AND THE REGION'S INFRASTRUCTURE, AS IT WILL STUDY POSSIBLE CONNECTION ALTERNATIVES FOR SOME OF THE COUNTRY'S MAIN ARTERIES. THE SCOPE OF SERVICE CONSISTS IN THE PREPARATION OF A FEASIBILITY STUDY, INCLUDING TRAFFIC AND ECONOMIC ANALYSIS OF DIFFERENT ALIGNMENT ALTERNATIVES.



# CONSTRUCTION OF LLOGARA TUNNEL

## **REVIEW OF FEASIBILITY STUDY AND DRAFTING OF THE DETAILED ENGINEERING PROJECT**



SEED Consulting Llogara Albania

MEP

THIS PROJECT IS BEING PREPARED IN PARTNERSHIP WITH "IC CONSULENTEN ZIVILTECHNIKER GESMBH", "ELEA IC D.O.O" "IBE D.D." AND "INFRAKONSULT" SH.P.K. THE LLOGARA TUNNEL IS LOCATED IN THE SOUTHERN ALBANIA, PART OF ROAD SECTION SH-8, WHICH BEARS THE MOST COMPLICATED TERRAIN AND THE WORST ROAD CONDITIONS, WITH A VERY LOW TRAFFIC CAPACITY AND A POOR LEVEL OF SERVICE, GIVING RISE TO A GREAT DRIVING RISK, ESPECIALLY DURING RAINY OR SNOWY WEATHER IN WINTER. THE PROJECT AIMS FIRST AND FOREMOST TO ADDRESS THE SH8 ROAD TRAFFIC SAFETY ISSUE IN THE RIDGE SECTION. IT WILL ALSO AIM AT PROMOTING LOCAL TOURISM DEVELOPMENT, IMPROVING PORT CLUSTERS CONSTRUCTION, AND UPGRADING DISTRIBUTION SYSTEM.







IDEÀS Rome Italy

REDESIGN



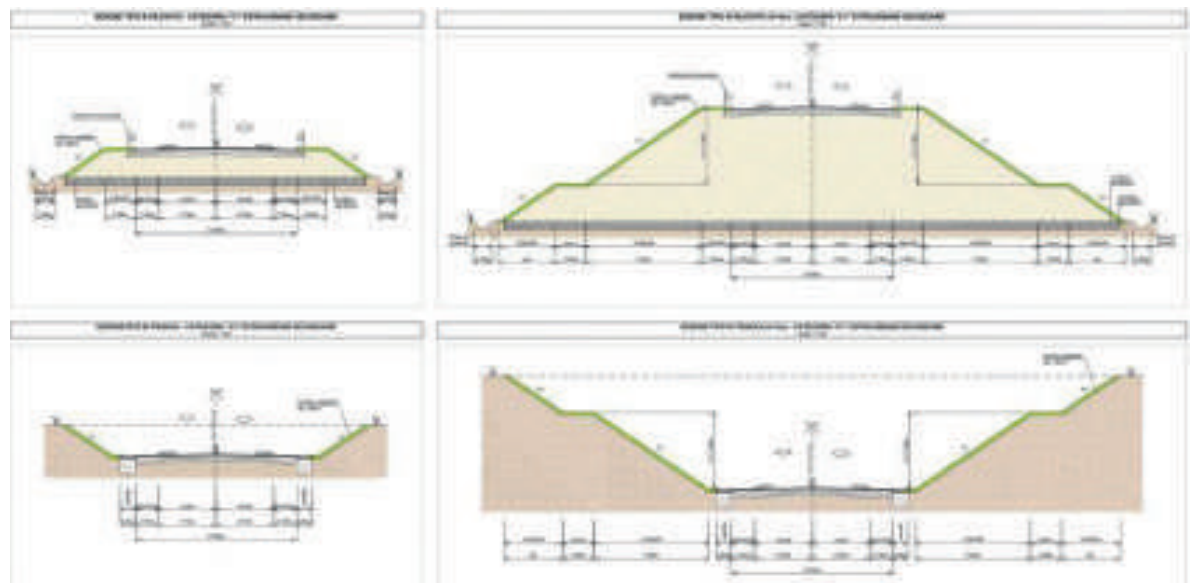
# JUBILEE INTERVENTION FOR THE ROUNDABOUT

JUBILEE INTERVENTION (2025) FOR THE REDESIGN OF THE INTERSECTION BETWEEN VIA CASILINA AND VIA SICULIANA, FEATURING THE INSTALLATION OF A ROUNDABOUT TO ENHANCE SAFETY AND IMPROVE TRAFFIC FLOW.



# ADRIATIC MULTIMODAL CORRIDOR

TECHNICAL AND ECONOMIC FEASIBILITY STUDY FOR THE SECOND  
INFRASTRUCTURE PHASE OF SS275 TRICASE - LEUCA.





[www.urbanprojectnet.it](http://www.urbanprojectnet.it)  
[info@urbanprojectnet.it](mailto:info@urbanprojectnet.it)

tel. +39 06 99344149

Via Tevere, 44  
00198 Roma - Italia